



RECHARGEABLE HEADLIGHT
VOLT 1700™
 HL-EL1020RC
 Manual



Before using the light, read this manual thoroughly and keep it for future reference.

Design Pat. Pending
 Copyright © 2017 CATEYE Co., Ltd.
 EL1020RC-170824 1



⚠ WARNING!!!

- This light emits an extremely powerful beam equivalent to automobile headlight so it may cause a hazardous situation depending on the beam angle used. Be sure to direct the light beam downward so the driver approaching does not get dazzled.
- Before your trip, please make sure the light is firmly mounted to the bracket, it lights up, and the light is not blocked by baggage, etc.
- Always attention to the remaining battery power by checking the indicator periodically while using.

⚠ CAUTION!

- Do not stare at the light when it is illuminating. Otherwise it may damage your eyesight.
- Do not place it within children's reach.
- In preparation for unexpected battery shutoff, we recommend you carry a spare cartridge battery and light.
- Mounting the light unit too close to a wireless computer may adversely affect the reading of the computer.
- This product is water-resistant under normal daily use and can be used in the rain. However, do not intentionally submerge it in water.
- If the light unit or parts become dirty with mud, etc., clean with a soft cloth which is moistened with mild soap. Never apply paint thinner, benzene or alcohol; damage will result.

⚠ LITHIUM-ION BATTERIES

Cautions on recharging

- Avoid charging in direct sunlight or in a vehicle parked under direct sunlight, and make sure to charge only when the ambient temperature is between 41°F and 104 °F (5 and 40°C).
- Before charging, be sure that no dust or other foreign objects attach to the USB plug.
- Do not subject the light to vibrations while charging.
- Once charging is complete, be sure to disconnect the USB plug.

Cautions in use

- Charging, discharging, and storing in high temperatures will cause the rechargeable battery to deteriorate faster. Do not place the light inside a vehicle or near a heater.
- When the operating time decreases significantly, the battery life is close to an end. Replace the cartridge battery with a new one.

Cautions on storage

- Cool and dry storage is recommended. For long period storage, it is important to charge the battery 30 minutes every 6 months.
- When you store the cartridge battery alone, be sure to install the cap. Otherwise, damage or a fire may be caused by short circuit.

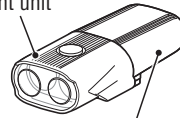
Cautions for dispose

Dispose of used cartridge batteries appropriately according to local regulations.

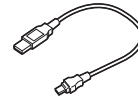
⚠ Before Initial Use

This unit is shipped with a small charge to check the light. Be sure to charge it before use, according to the instructions "HOW TO CHARGE".

Light unit



Cartridge battery (BA-6.8TF)



USB cable (MICRO USB)



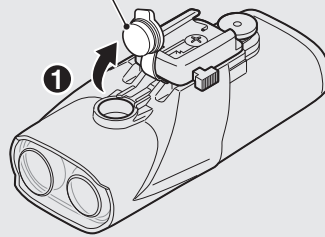
FlexTight™ bracket (H-34N)

1 HOW TO CHARGE

Standard charging time

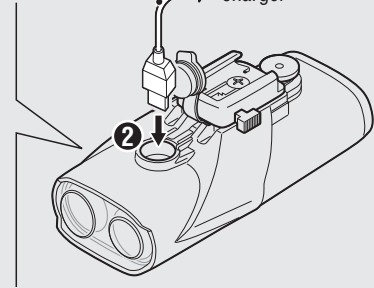
Approx. 5.5 – 15 h

Charge jack cover



USB cable

To PC or USB battery charger



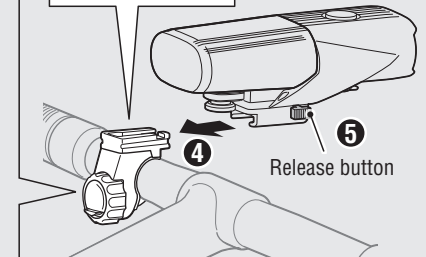
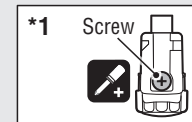
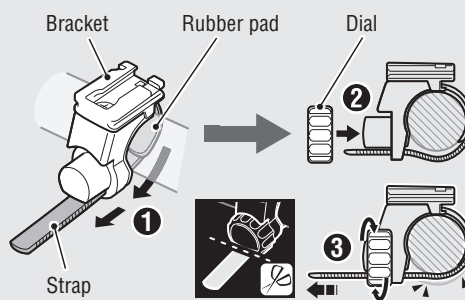
1. Connect the light unit to your PC or a commercial USB battery charger using the USB cable. (1 – 2)
 The switch lights up, and charging starts.

Switch button light	State (charging rate)
Illuminated in red	Charging (less than 50%)
Illuminated in orange	Charging (more than 50%)
Illuminated in green	Charging is completed

- * When your PC is in sleep state, the unit cannot be charged.
- * Use a USB battery charger of 500mAh (USB2.0) or more. The cartridge can be fast-charged with high capacity USB battery charger.

2. After charging is completed, remove the USB cable, and install the charge jack cover.
 * The battery charges to about 80% after approximately 12 hours.
 * Charging and lighting times are approximate values, and will vary by environmental and user conditions.

2 HOW TO MOUNT TO A BICYCLE



1. Mount the bracket to the handlebar. (1 – 3)
2. Insert the light unit into the bracket until it clicks, and adjust the beam angle. (4)

⚠ Beam angle adjustment

Turn on the light on a smooth road at night, and loosen the dial slightly to move the bracket. Adjust the beam angle so it does not direct to a driver approaching and then tighten the dial firmly to fix the bracket.



3. To remove the light unit, pull out it forward while pressing down on the release button (5).

CAUTION!

- Be sure to tighten the dial by hand. When you tighten it too hard with a tool, the screw thread may be stripped.
- Check the dial and screw (*1) on the bracket periodically, and use them without any loosening.
- Round off the cut edge of the bracket strap to prevent injury.

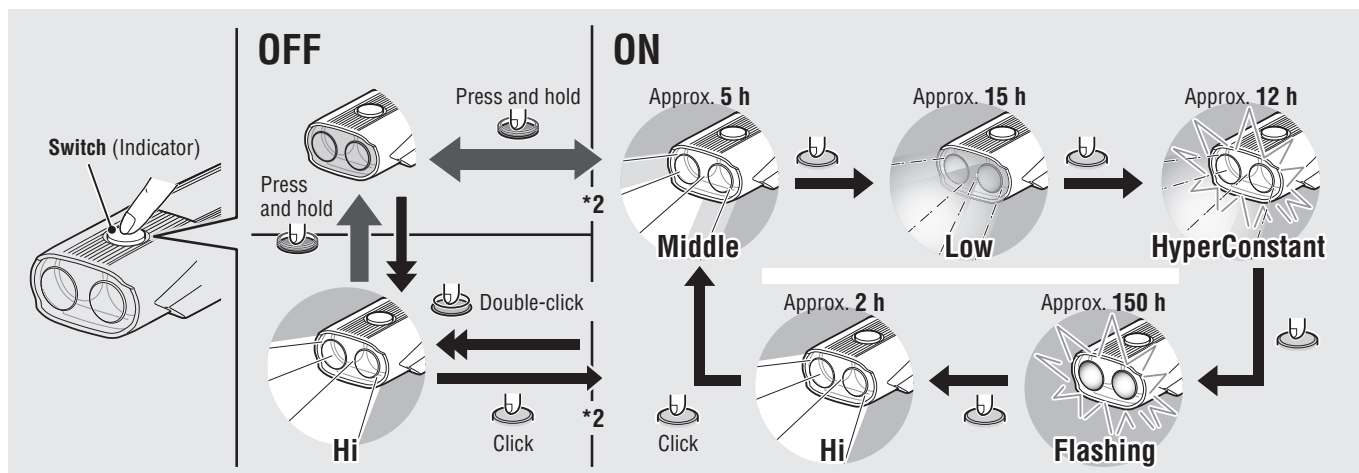
3 SWITCH OPERATION (SWITCHING THE LIGHTING MODE)

WARNING!!!: Do not use this light on a public road.

The ON/OFF and lighting modes are selected using a switch.

*2 When you turn the light on, it lights up in the last lighting mode you used. (Mode memory function)

* The light unit may get hot depending on the condition the light is used in but it is not a malfunction. When it gets hot, protection circuit activates and it automatically lowers brightness level. Once it is cooled down, the light recovers the previous brightness level.



Remaining battery capacity (Battery indicator)

When the switch lights up, there is little remaining battery power.

Switch button light	Remaining battery power
Illuminated in orange	50 - 30 %
Illuminated in red	30 - 15 %
Flashing in red	Less than 15%

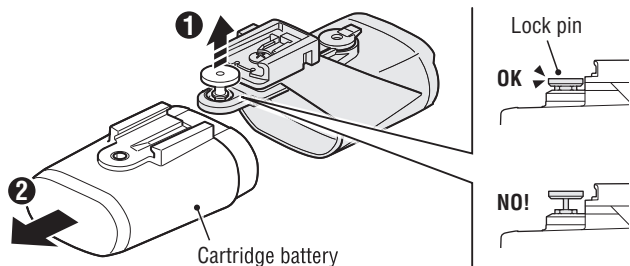
4 HOW TO REPLACE THE CARTRIDGE BATTERY

Remove the cartridge battery according to the procedure. (1 - 2)

To install the cartridge, reverse the procedure.

CAUTION!: Make sure the lock pin fits firmly into the cartridge battery.

If not locked firmly, the cartridge battery may drop off and it may cause sudden turn off.



SPECIFICATIONS

Light source	High-intensity LED x 2
Cartridge battery	Li-ion 3.6v 6800 mAh : BA-6.8TF
Charge	Micro USB plug
Operating time	Hi : Approx. 2 hours Middle : Approx. 5 hours Low : Approx. 15 hours HyperConstant : Approx. 12 hours Flashing : Approx. 150 hours * Average runtime at 20°C.
Standard charging time	Approx. 5.5 - 15 hours
Temperature range	Charging : 41°F - 104°F (5°C - 40°C) Operating : 14°F - 104°F (-10°C - 40°C)
Recharge/discharge number of times	About 300 times (until the rated capacity drops to 70%)
Dimensions/weight	4-45/64" x 2-13/64" x 1-55/64" (119.3 x 56 x 47.3 mm) / 9.04 oz (256.3 g) (Including the cartridge battery)

* The specifications and design are subject to change without notice.

SPARE/OPTIONAL PARTS

5338827N

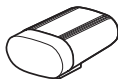
FlexTight™ bracket



(H-34N)

5343200

Cartridge battery
(Li-ion 3.6v 6800 mAh)



(BA-6.8TF)

5341831N

Helmet mount



5342440

Center fork bracket



5342730

USB cable



(MICRO USB)

LIMITED WARRANTY

2-year Warranty : Light unit only

(Deterioration of the cartridge battery is out of warranty)

CatEye products are warranted to be free of defects from materials and workmanship for a period of 2 years from original purchase. If the product fails to work during normal use, CatEye will repair or replace the defect at no charge. Service must be performed by CatEye or an authorized retailer. To return the product, pack it carefully and enclose the warranty certificate (proof of purchase) with instruction for repair. Please write or type your name and address clearly on the warranty certificate. Insurance, handling and transportation charges to CatEye shall be borne by person desiring service. For UK and REPUBLIC OF IRELAND consumers, please return to the place of purchase. This does not affect your statutory rights.

Please register your CatEye product on the website.

<http://www.cateye.com/en/support/regist/>

CATEYE CO., LTD.

2-8-25, Kuwazu, Higashi Sumiyoshi-ku,
Osaka 546-0041 Japan
Attn: CATEYE Customer Service Section
Phone : (06)6719-6863
Fax : (06)6719-6033
E-mail : support@cateye.co.jp
URL : <http://www.cateye.com>

[For US Customers]

CATEYE AMERICA, INC.

2825 Wilderness Place Suite 1200,
Boulder CO 80301-5494 USA
Phone : 303.443.4595
Toll Free : 800.5.CATEYE
Fax : 303.473.0006
E-mail : service@cateye.com